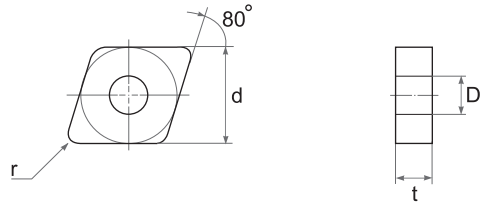
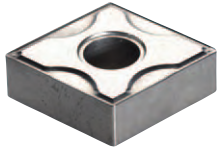


# Cermet Insert

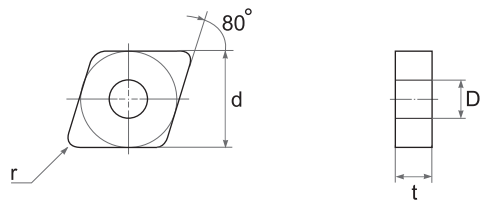
<b>T</b> urning	A76
<b>M</b> illing	A89
<b>S</b> pecial	A94

## CERMET

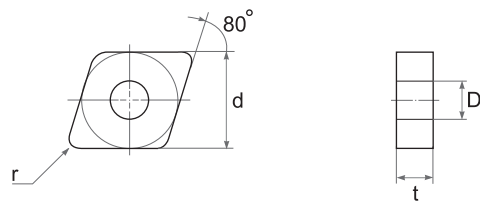
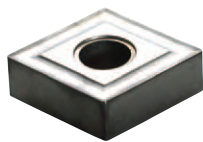
### CNMG



Type		Dimensions (mm)				Cermet(TiCN)				Cermet(PVD)			
ISO	ASA	d	t	r	D	TX510	TX515	TX520	TX530	TX910	TX915	TX920	TX930
<b>CNMG 120404SF</b>	<b>CNMG 431SF</b>	12.70	4.76	0.4	5.16		•	•				•	
<b>CNMG 120408SF</b>	<b>CNMG 432SF</b>	12.70	4.76	0.8	5.16								
<b>CNMG 120412SF</b>	<b>CNMG 433SF</b>	12.70	4.76	1.2	5.16								

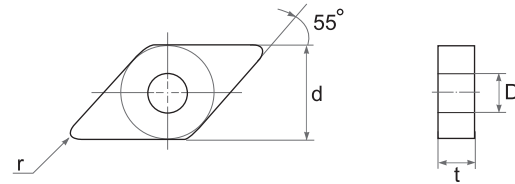
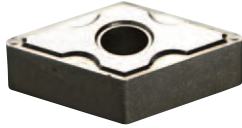


Type		Dimensions (mm)				Cermet(TiCN)				Cermet(PVD)			
ISO	ASA	d	t	r	D	TX510	TX515	TX520	TX530	TX910	TX915	TX920	TX930
<b>CNMG 120404SY</b>	<b>CNMG 431SY</b>	12.70	4.76	0.4	5.16								
<b>CNMG 120408SY</b>	<b>CNMG 432SY</b>	12.70	4.76	0.8	5.16		•	•				•	
<b>CNMG 120412SY</b>	<b>CNMG 433SY</b>	12.70	4.76	1.2	5.16		•	•				•	

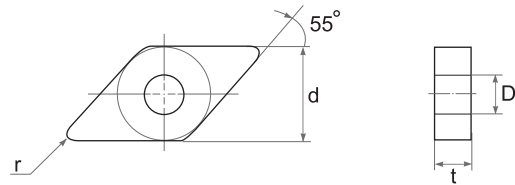
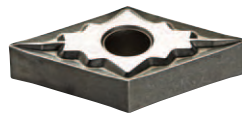


Type		Dimensions (mm)				Cermet(TiCN)				Cermet(PVD)			
ISO	ASA	d	t	r	D	TX510	TX515	TX520	TX530	TX910	TX915	TX920	TX930
<b>CNMG 120404SG</b>	<b>CNMG 431SG</b>	12.70	4.76	0.4	5.16								
<b>CNMG 120408SG</b>	<b>CNMG 432SG</b>	12.70	4.76	0.8	5.16		•	•				•	
<b>CNMG 120412SG</b>	<b>CNMG 433SG</b>	12.70	4.76	1.2	5.16								

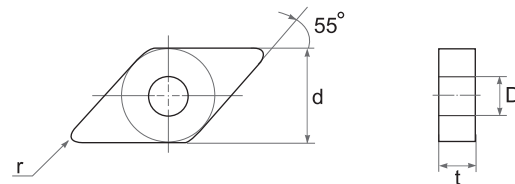
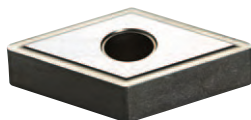
### DNMG



Type		Dimensions (mm)				Cermet(TiCN)				Cermet(PVD)			
ISO	ASA	d	t	r	D	TX510	TX515	TX520	TX530	TX910	TX915	TX920	TX930
DNMG 150404SF	DNMG 431SF	12.70	4.76	0.4	5.16		●	●					
DNMG 150408SF	DNMG 432SF	12.70	4.76	0.8	5.16		●	●				●	
DNMG 150412SF	DNMG 433SF	12.70	4.76	1.2	5.16		●						
DNMG 150604SF	DNMG 441SF	12.70	6.35	0.4	5.16		●						
DNMG 150608SF	DNMG 442SF	12.70	6.35	0.8	5.16		●						
DNMG 150612SF	DNMG 443SF	12.70	6.35	1.2	5.16		●						



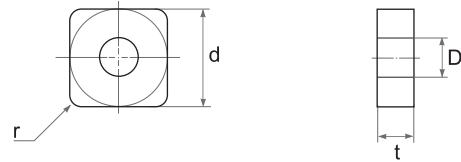
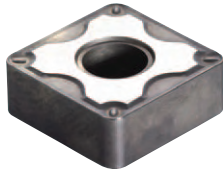
Type		Dimensions (mm)				Cermet(TiCN)				Cermet(PVD)			
ISO	ASA	d	t	r	D	TX510	TX515	TX520	TX530	TX910	TX915	TX920	TX930
DNMG 150404SY	DNMG 431SY	12.70	4.76	0.4	5.16		●	●				●	
DNMG 150408SY	DNMG 432SY	12.70	4.76	0.8	5.16		●	●				●	
DNMG 150412SY	DNMG 433SY	12.70	4.76	1.2	5.16		●						
DNMG 150604SY	DNMG 441SY	12.70	6.35	0.4	5.16		●	●					
DNMG 150608SY	DNMG 442SY	12.70	6.35	0.8	5.16		●	●					
DNMG 150612SY	DNMG 443SY	12.70	6.35	1.2	5.16		●	●					



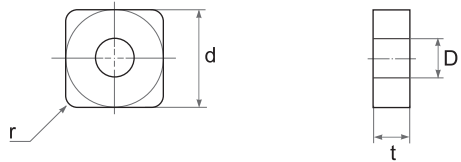
Type		Dimensions (mm)				Cermet(TiCN)				Cermet(PVD)			
ISO	ASA	d	t	r	D	TX510	TX515	TX520	TX530	TX910	TX915	TX920	TX930
DNMG 150404SG	DNMG 431SG	12.70	4.76	0.4	5.16		●						
DNMG 150408SG	DNMG 432SG	12.70	4.76	0.8	5.16		●						
DNMG 150412SG	DNMG 433SG	12.70	4.76	1.2	5.16		●						
DNMG 150604SG	DNMG 441SG	12.70	6.35	0.4	5.16		●	●					
DNMG 150608SG	DNMG 442SG	12.70	6.35	0.8	5.16		●	●					
DNMG 150612SG	DNMG 443SG	12.70	6.35	1.2	5.16		●						

## CERMET

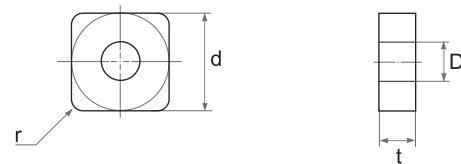
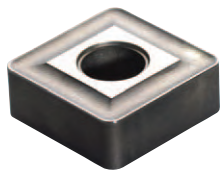
### SNMG



Type		Dimensions (mm)				Cermet(TiCN)				Cermet(PVD)			
ISO	ASA	d	t	r	D	TX510	TX515	TX520	TX530	TX910	TX915	TX920	TX930
<b>SNMG 120404SF</b>	<b>SNMG 431SF</b>	12.70	4.76	0.4	5.16		●	●					
<b>SNMG 120408SF</b>	<b>SNMG 432SF</b>	12.70	4.76	0.8	5.16		●	●			●		
<b>SNMG 120412SF</b>	<b>SNMG 433SF</b>	12.70	4.76	1.2	5.16		●	●					

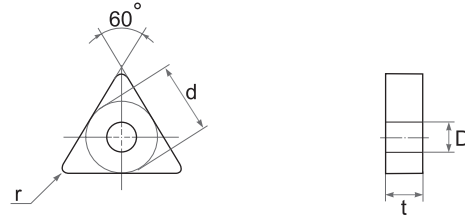


Type		Dimensions (mm)				Cermet(TiCN)				Cermet(PVD)			
ISO	ASA	d	t	r	D	TX510	TX515	TX520	TX530	TX910	TX915	TX920	TX930
<b>SNMG 120404SY</b>	<b>SNMG 431SY</b>	12.70	4.76	0.4	5.16		●						
<b>SNMG 120408SY</b>	<b>SNMG 432SY</b>	12.70	4.76	0.8	5.16		●	●			●		
<b>SNMG 120412SY</b>	<b>SNMG 433SY</b>	12.70	4.76	1.2	5.16		●						

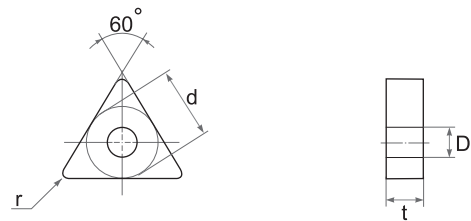


Type		Dimensions (mm)				Cermet(TiCN)				Cermet(PVD)			
ISO	ASA	d	t	r	D	TX510	TX515	TX520	TX530	TX910	TX915	TX920	TX930
<b>SNMG 120404SG</b>	<b>SNMG 431SG</b>	12.70	4.76	0.4	5.16		●						
<b>SNMG 120408SG</b>	<b>SNMG 432SG</b>	12.70	4.76	0.8	5.16		●	●			●		
<b>SNMG 120412SG</b>	<b>SNMG 433SG</b>	12.70	4.76	1.2	5.16		●	●					

### TNMG

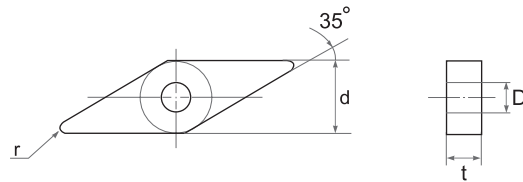


Type		Dimensions (mm)				Cermet(TiCN)				Cermet(PVD)			
ISO	ASA	d	t	r	D	TX510	TX515	TX520	TX530	TX910	TX915	TX920	TX930
TNMG 160404SY	TNMG 331SY	9.52	4.76	0.4	3.81		●						
TNMG 160408SY	TNMG 332SY	9.52	4.76	0.8	3.81		●	●					
TNMG 160412SY	TNMG 333SY	9.52	4.76	1.2	3.81		●	●					



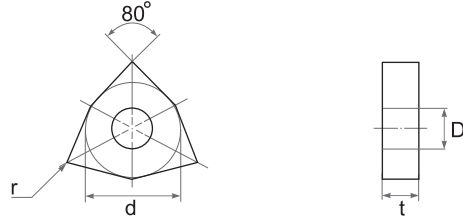
Type		Dimensions (mm)				Cermet(TiCN)				Cermet(PVD)			
ISO	ASA	d	t	r	D	TX510	TX515	TX520	TX530	TX910	TX915	TX920	TX930
TNMG 160404SG	TNMG 331SG	9.52	4.76	0.4	3.81		●						
TNMG 160408SG	TNMG 332SG	9.52	4.76	0.8	3.81		●	●					
TNMG 160412SG	TNMG 333SG	9.52	4.76	1.2	3.81		●	●					

### VNMG

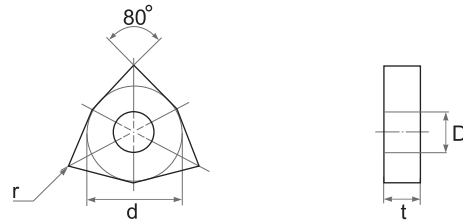
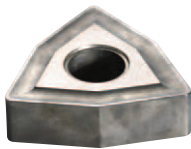


Type		Dimensions (mm)				Cermet(TiCN)				Cermet(PVD)			
ISO	ASA	d	t	r	D	TX510	TX515	TX520	TX530	TX910	TX915	TX920	TX930
VNMG 160404SG	VNMG 331SG	9.52	4.76	0.4	3.81	•	•	•					
VNMG 160408SG	VNMG 332SG	9.52	4.76	0.8	3.81	•	•	•					

### WNMG



Type		Dimensions (mm)				Cermet(TiCN)				Cermet(PVD)			
ISO	ASA	d	t	r	D	TX510	TX515	TX520	TX530	TX910	TX915	TX920	TX930
<b>WNMG 080404SY</b>	<b>WNMG 431SY</b>	12.70	4.76	0.4	5.16		●						
<b>WNMG 080408SY</b>	<b>WNMG 432SY</b>	12.70	4.76	0.8	5.16		●	●					
<b>WNMG 080412SY</b>	<b>WNMG 433SY</b>	12.70	4.76	1.2	5.16		●						

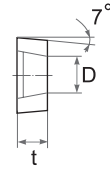
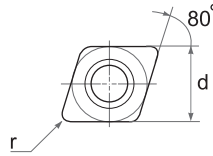


Type		Dimensions (mm)				Cermet(TiCN)				Cermet(PVD)			
ISO	ASA	d	t	r	D	TX510	TX515	TX520	TX530	TX910	TX915	TX920	TX930
<b>WNMG 080404SG</b>	<b>WNMG 431SG</b>	12.70	4.76	0.4	5.16		●	●					
<b>WNMG 080408SG</b>	<b>WNMG 432SG</b>	12.70	4.76	0.8	5.16		●	●					
<b>WNMG 080412SG</b>	<b>WNMG 433SG</b>	12.70	4.76	1.2	5.16		●	●					



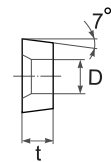
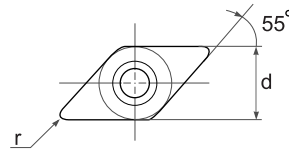
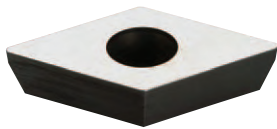
## CERMET

### CCMT



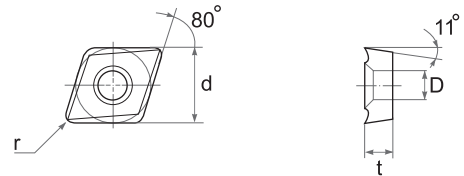
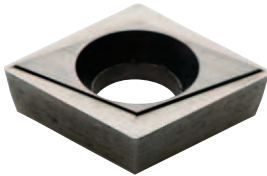
Type	Dimensions (mm)				Cermet(TiCN)				Cermet(PVD)			
	d	t	r	D	TX510	TX515	TX520	TX530	TX910	TX915	TX920	TX930
ISO												
<b>CCMT 09T304</b>	9.52	3.97	0.4	4.40	●	●	●					
<b>CCMT 09T308</b>	9.52	3.97	0.8	4.40	●	●	●					

### DCGW



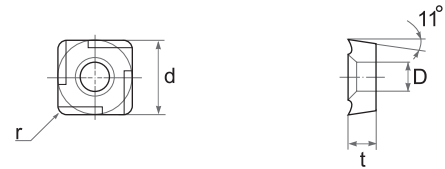
Type	Dimensions (mm)				Cermet(TiCN)				Cermet(PVD)			
	d	t	r	D	TX510	TX515	TX520	TX530	TX910	TX915	TX920	TX930
ISO												
<b>DCGW 090304 XF</b>	8.50	3.18	0.4	3.60			●					
<b>DCGW 11T304</b>	9.52	3.97	0.4	4.40			●					

### CPGT



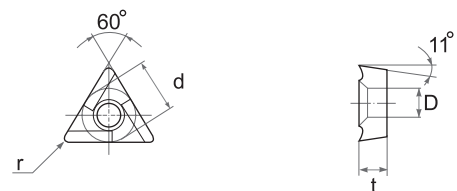
Type		Dimensions (mm)				Cermet(TiCN)				Cermet(PVD)			
ISO	ASA	d	t	r	D	TX510	TX515	TX520	TX530	TX910	TX915	TX920	TX930
CPGT 090304	CPGT 321	9.52	3.18	0.4	4.50	●	●						
CPGT 090308	CPGT 322	9.52	3.18	0.8	4.50	●	●						

### SPGT



Type		Dimensions (mm)				Cermet(TiCN)				Cermet(PVD)			
ISO	ASA	d	t	r	D	TX510	TX515	TX520	TX530	TX910	TX915	TX920	TX930
SPGT 090304R/L	SPGT 321R/L	9.52	3.18	0.4	3.40	●	●						
SPGT 090308R/L	SPGT 322R/L	9.52	3.18	0.8	3.40	●	●						

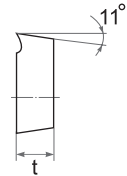
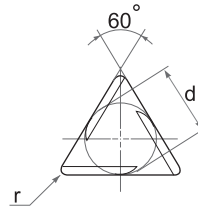
### TPGT



Type		Dimensions (mm)				Cermet(TiCN)				Cermet(PVD)			
ISO	ASA	d	t	r	D	TX510	TX515	TX520	TX530	TX910	TX915	TX920	TX930
TPGT 110304R/L	TPGT 221R/L	6.35	3.18	0.4	3.56	●	●						
TPGT 110308R/L	TPGT 222R/L	6.35	3.18	0.8	3.56	●	●						
TPGT 160304R/L	TPGT 321R/L	9.52	3.18	0.4	4.46	●	●						
TPGT 160308R/L	TPGT 322R/L	9.52	3.18	0.8	4.46	●	●						
TPGT 160404R/L	TPGT 331R/L	9.52	4.76	0.4	4.40	●	●						
TPGT 160408R/L	TPGT 332R/L	9.52	4.76	0.8	4.40	●	●						

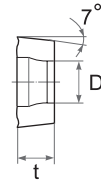
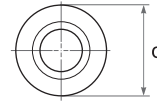
## CERMET

### TPGR



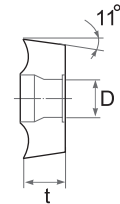
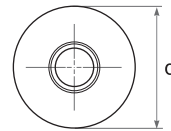
Type	Dimensions (mm)			Cermet(TiCN)				Cermet(PVD)			
	d	t	r	TX510	TX515	TX520	TX530	TX910	TX915	TX920	TX930
ISO											
TPGR 110302R/L	6.35	3.18	0.2								
TPGR 110304R/L	6.35	3.18	0.4		●						
TPGR 110308R/L	6.35	3.18	0.8								
TPGR 160302R/L	9.52	3.18	0.2		●						
TPGR 160304R/L	9.52	3.18	0.4		●						
TPGR 160308R/L	9.52	3.18	0.8		●						
TPGR 220404K-R/L	12.70	4.76	0.4		●						
TPGR 220408K-R/L	12.70	4.76	0.8		●						
TPGR 220412K-R/L	12.70	4.76	1.2		●						

### RCMT



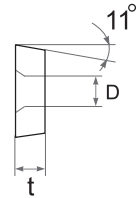
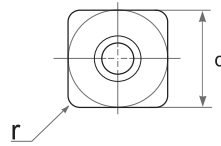
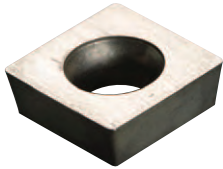
Type	Dimensions (mm)			Cermet(TiCN)				Cermet(PVD)			
	d	t	D	TX510	TX515	TX520	TX530	TX910	TX915	TX920	TX930
<b>RCMT 0602MO</b>	6.00	2.38	2.80		•						

### RPMT



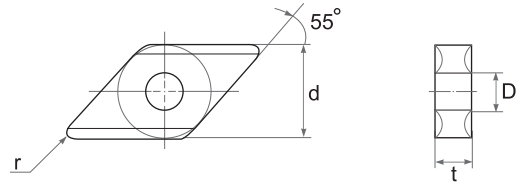
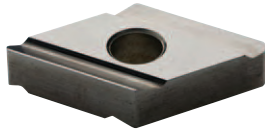
Type	Dimensions (mm)			Cermet(TiCN)				Cermet(PVD)			
	d	t	D	TX510	TX515	TX520	TX530	TX910	TX915	TX920	TX930
<b>RPMT 120300G</b>	12.00	3.18	4.40		•	•					
<b>RPMT 160400G</b>	16.00	4.76	5.60		•	•					

### SPMW



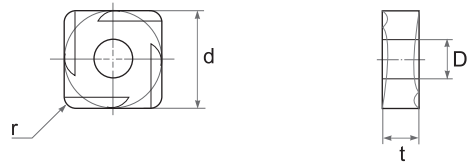
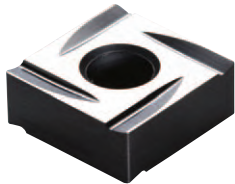
Type		Dimensions (mm)				Cermet(TiCN)				Cermet(PVD)			
ISO	ASA	d	t	r	D	TX510	TX515	TX520	TX530	TX910	TX915	TX920	TX930
<b>SPMW 090304</b>	<b>SPMW 321</b>	9.52	3.18	0.4	3.81		●	●					
<b>SPMW 090308</b>	<b>SPMW 322</b>	9.52	3.18	0.8	3.81		●	●					

### DNGG



Type		Dimensions (mm)				Cermet(TiCN)				Cermet(PVD)			
ISO	ASA	d	t	r	D	TX510	TX515	TX520	TX530	TX910	TX915	TX920	TX930
DNGG 150404R/L	DNGG 431R/L	12.70	4.76	0.4	5.16		●	●					
DNGG 150408R/L	DNGG 432R/L	12.70	4.76	0.8	5.16		●	●					
DNGG 150604R/L	DNGG 441R/L	12.70	6.35	0.4	5.16		●	●					
DNGG 150608R/L	DNGG 442R/L	12.70	6.35	0.8	5.16		●	●					

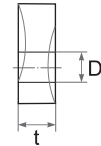
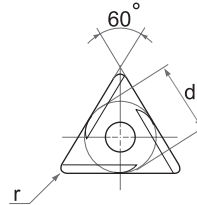
### SNGG



Type		Dimensions (mm)				Cermet(TiCN)				Cermet(PVD)			
ISO	ASA	d	t	r	D	TX510	TX515	TX520	TX530	TX910	TX915	TX920	TX930
SNGG 120404R/L	SNGG 431R/L	12.70	4.76	0.4	5.16			●					
SNGG 120408R/L	SNGG 432R/L	12.70	4.76	0.8	5.16		●	●					
SNGG 120412R/L	SNGG 433R/L	12.70	4.76	1.2	5.16								

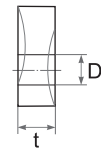
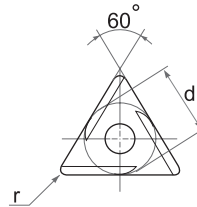
## CERMET

### TNGG



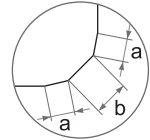
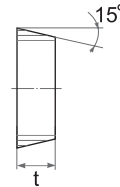
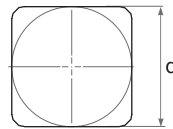
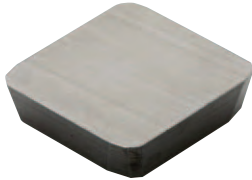
Type		Dimensions (mm)				Cermet(TiCN)				Cermet(PVD)			
ISO	ASA	d	t	r	D	TX510	TX515	TX520	TX530	TX910	TX915	TX920	TX930
TNGG 160404R/L	TNGG 331R/L	9.52	4.76	0.4	3.81		●	●					
TNGG 160408R/L	TNGG 332R/L	9.52	4.76	0.8	3.81		●	●					
TNGG 220404R/L	TNGG 431R/L	12.70	4.76	0.4	5.16		●	●					
TNGG 220408R/L	TNGG 432R/L	12.70	4.76	0.8	5.16		●	●					

### TNMG



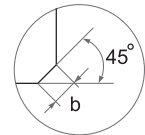
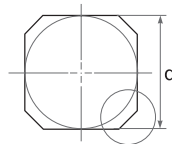
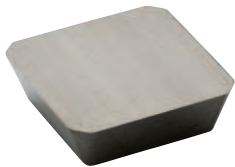
Type		Dimensions (mm)				Cermet(TiCN)				Cermet(PVD)			
ISO	ASA	d	t	r	D	TX510	TX515	TX520	TX530	TX910	TX915	TX920	TX930
TNMG 160404R/L 2G	TNMG 331R/L 2G	9.52	4.76	0.4	3.81		●	●					
TNMG 160408R/L 2G	TNMG 332R/L 2G	9.52	4.76	0.8	3.81		●	●					

### SDCN



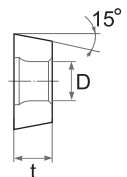
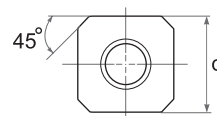
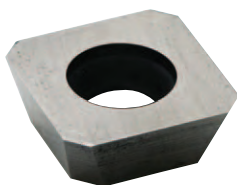
Type		Dimensions (mm)				Cermet(TiCN)				Cermet(PVD)			
ISO	ASA	d	t	a	b	TX510	TX515	TX520	TX530	TX910	TX915	TX920	TX930
SDCN 1203MT	SDCN 42MT	12.70	3.18	0.50	1.40			•	•				
SDCN 1504MT	SDCN 53MT	15.87	4.76	0.50	1.40								

### SDKN



Type		Dimensions (mm)			Cermet(TiCN)				Cermet(PVD)			
ISO	ASA	d	t	b	TX510	TX515	TX520	TX530	TX910	TX915	TX920	TX930
SDKN 1203AETN	SDKN 42AETN	12.70	3.18	2.00			•	•				•
SDKN 1504AETN	SDKN 53AETN	15.87	4.76	2.00			•	•				•

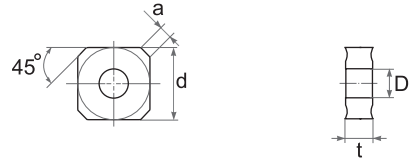
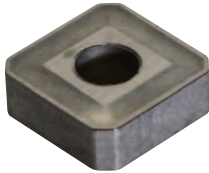
### SDEW



Type		Dimensions (mm)			Cermet(TiCN)				Cermet(PVD)			
ISO	ASA	d	t	D	TX510	TX515	TX520	TX530	TX910	TX915	TX920	TX930
SDEW 1204AZT	SDEW 43AZT	12.70	4.76	5.20			•	•				

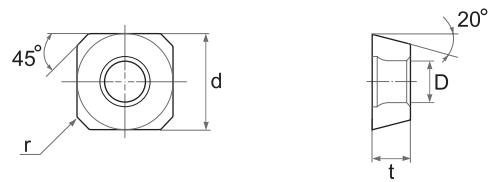


### SNK



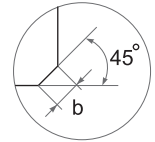
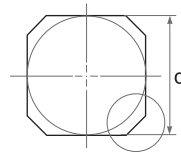
Type		Dimensions (mm)				Cermet(TiCN)				Cermet(PVD)			
ISO	ASA	d	t	D	a	TX510	TX515	TX520	TX530	TX910	TX915	TX920	TX930
SNK 0903AEN	SNK 32AEN	9.52	3.18	3.81	1.40		•						

### SEHW



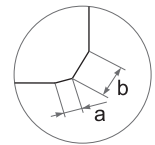
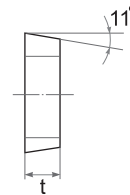
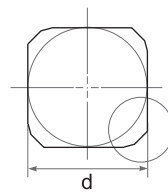
Type		Dimensions (mm)				Cermet(TiCN)				Cermet(PVD)			
ISO	ASA	d	t	D	r	TX510	TX515	TX520	TX530	TX910	TX915	TX920	TX930
SEHW 120408AE	SEHW 432AE	12.70	4.76	5.50	0.8				•				

### SEKN



Type		Dimensions (mm)			Cermet(TiCN)				Cermet(PVD)			
ISO	ASA	d	t	b	TX510	TX515	TX520	TX530	TX910	TX915	TX920	TX930
SEKN 1203AFTN	SEKN 42AFTN	12.70	3.18	2.00			•	•				
SEKN 1504AFTN	SEKN 53AFTN	15.87	4.76	2.00			•	•				

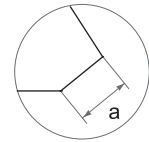
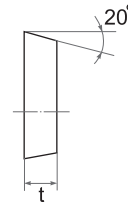
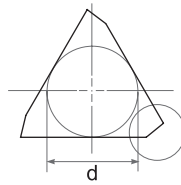
### SPKN



Type		Dimensions (mm)				Cermet(TiCN)				Cermet(PVD)			
ISO	ASA	d	t	a	b	TX510	TX515	TX520	TX530	TX910	TX915	TX920	TX930
SPKN 1203EDTR/L	SPKN 42EDTR/L	12.70	3.18	1.00	1.40			•	•				
SPKN 1504EDTR/L	SPKN 53EDTR/L	15.87	4.76	1.00	1.40			•	•				

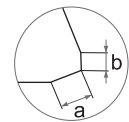
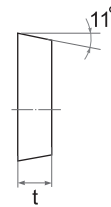
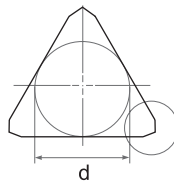
## CERMET

### TEKN



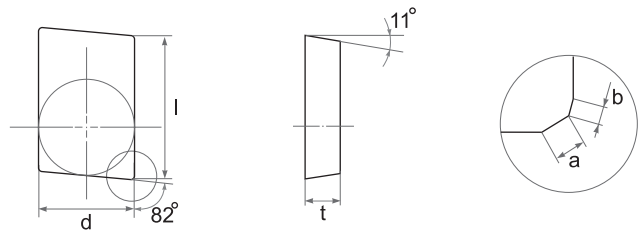
Type		Dimensions (mm)			Cermet(TiCN)				Cermet(PVD)			
ISO	ASA	d	t	a	TX510	TX515	TX520	TX530	TX910	TX915	TX920	TX930
TEKN 1603PETR/L	TEKN 32PETR/L	9.52	3.18	1.40			●	●				
TEKN 2204PETR/L	TEKN 43PETR/L	12.70	4.76	2.00			●	●				
TEKN 1603PEER/L	TEKN 32PEER/L	9.52	3.18	1.40			●	●				
TEKN 2204PEER/L	TEKN 43PEER/L	12.70	4.76	2.00			●	●				

### TPKN



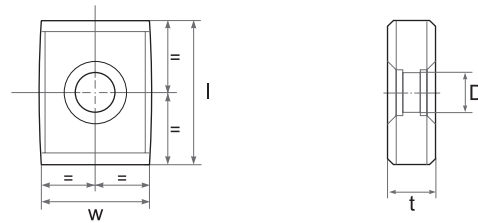
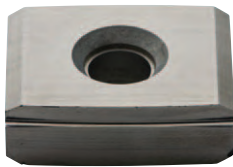
Type		Dimensions (mm)				Cermet(TiCN)				Cermet(PVD)			
ISO	ASA	d	t	a	b	TX510	TX515	TX520	TX530	TX910	TX915	TX920	TX930
TPKN 1603PDTR/L	TPKN 32PDTR/L	9.52	3.18	1.20	1.00			●	●				
TPKN 2204PDTR/L	TPKN 43PDTR/L	12.70	4.76	1.40	0.70			●	●				

### BPKX



Type	Dimensions (mm)					Cermet(TiCN)				Cermet(PVD)				
	ISO	l	d	t	a	b	TX510	TX515	TX520	TX530	TX910	TX915	TX920	TX930
<b>BPKX 1504PDR/L</b>	15.87	12.70	4.76	2.00	0.70	●								
<b>BPKX 1904PDR/L</b>	19.05	12.70	4.76	2.60	0.70	●								

### YCE

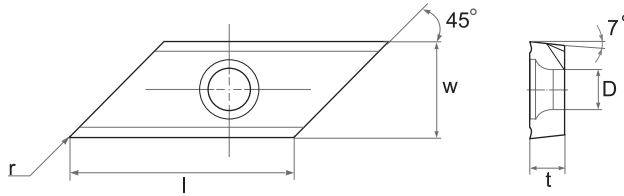


Type	Dimensions (mm)				Cermet(TiCN)				Cermet(PVD)				
	ISO	l	w	t	D	TX510	TX515	TX520	TX530	TX910	TX915	TX920	TX930
<b>YCE 434-01</b>	19.05	14.29	6.35	5.25		●	●	●					

## CERMET

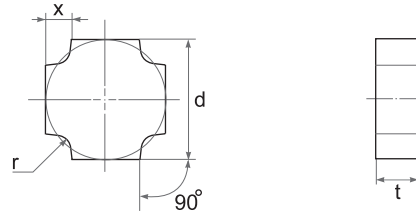
Turning & Milling

### XCET



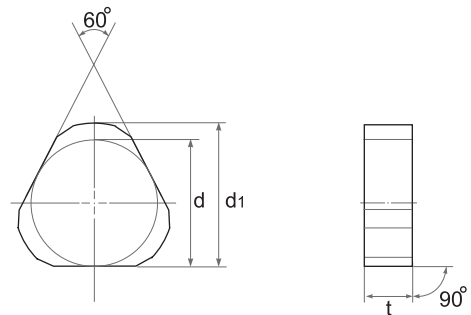
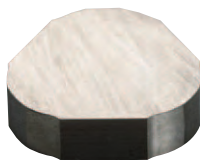
Type	Dimensions (mm)					Cermet(TiCN)				Cermet(PVD)			
	l	w	t	D	r	TX510	TX515	TX520	TX530	TX910	TX915	TX920	TX930
XCET 310404 ER	22.00	12.70	4.50	5.60	0.4			●					

### BSN



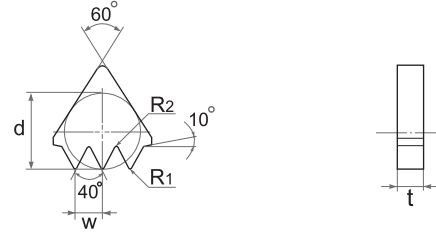
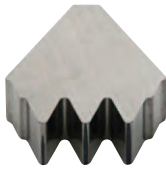
Type ISO	Dimensions (mm)				Cermet(TiCN)				Cermet(PVD)			
	d	x	t	r	TX510	TX515	TX520	TX530	TX910	TX915	TX920	TX930
<b>BSN 090306</b>	9.52	2.00	3.18	0.6			●					
<b>BSN 090310</b>	9.52	2.57	3.18	1.0			●					
<b>BSN 120406</b>	12.70	2.14	4.76	0.6			●					
<b>BSN 120410</b>	12.70	2.40	4.76	1.0			●					
<b>BSN 120415</b>	12.70	3.00	4.76	1.5			●					
<b>BSN 120420</b>	12.70	3.45	4.76	2.0			●					
<b>BSN 150525</b>	15.87	4.00	5.56	2.5			●					
<b>BSN 150530</b>	15.87	4.70	5.56	3.0			●					

### BTN



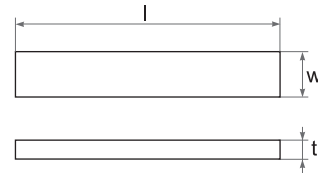
Type ISO	Dimensions (mm)			Cermet(TiCN)				Cermet(PVD)			
	d	d1	t	TX510	TX515	TX520	TX530	TX910	TX915	TX920	TX930
<b>BTN 1464</b>	12.70	14.60	4.76			●					
<b>BTN 1714</b>	15.87	17.10	4.76			●					
<b>BTN 2116</b>	19.05	21.10	6.00			●					
<b>BTN 2416</b>	22.22	24.10	6.00			●					
<b>BTN 2718</b>	25.40	27.10	8.80			●					

### INGN



Type	Dimensions (mm)					Cermet(TiCN)				Cermet(PVD)				
	ISO	d	t	w	R1	R2	TX510	TX515	TX520	TX530	TX910	TX915	TX920	TX930
<b>INGN 160435 F303</b>	9.52	4.76	3.56	0.5	0.3			●						
<b>INGN 160435 F304</b>	9.52	4.76	3.56	0.5	0.4			●						
<b>INGN 220435 F403</b>	12.70	4.76	3.56	0.5	0.3									
<b>INGN 220435 F404</b>	12.70	4.76	3.56	0.5	0.4									

## SBAR



Type ISO	Dimensions (mm)			Cermet(TiCN)				Cermet(PVD)			
	l	w	t	TX510	TX515	TX520	TX530	TX910	TX915	TX920	TX930
SBAR 040825	26.11	8.89	5.30			●					
SBAR 041608	16.67	4.75	8.10			●					
SBAR 050518	18.01	5.15	5.00			●					
SBAR 050620	22.35	4.95	6.30			●					
SBAR 056440	47.31	6.78	5.50			●					
SBAR 060331	34.75	5.94	6.35			●					
SBAR 121985	19.10	12.67	8.50			●					
SBAR 122025	25.50	1.40	2.20			●					
SBAR 122525	25.50	1.40	2.70			●					
SBAR 1295632	12.90	5.60	3.20			●					
SBAR 151985	19.10	15.30	8.50			●					
SBAR 163025	29.82	3.47	1.60			●					
SBAR 163315	15.62	3.41	1.60			●					
SBAR 163815	16.67	4.75	1.60			●					
SBAR 173815	15.06	3.69	1.70			●					
SBAR 203530	29.59	3.44	2.00			●					
SBAR 204035	34.53	3.94	2.00			●					
SBAR 704035	34.78	3.97	7.00			●					
SBAR 224816	16.67	4.72	2.20			●					
SBAR 255022	22.18	4.92	2.50			●					
SBAR 256035	34.49	5.89	2.50			●					
SBAR 306035	34.75	6.00	3.00			●					
SBAR 324850	3.60	5.10	50.00			●					
SBAR 326650	3.60	7.00	50.00			●					
SBAR 345022	22.35	4.95	3.40			●					
SBAR 327025	24.44	7.09	3.35			●					
SBAR 325075	71.94	14.39	3.20			●					
SBAR 327050	50.00	7.00	3.20			●					
SBAR 368950	50.40	8.92	3.60			●					
SBAR 328550	50.03	8.85	3.20			●					
SBAR 607050	50.40	8.92	6.50			●					
SBAR 638232	32.72	8.99	6.30			●					